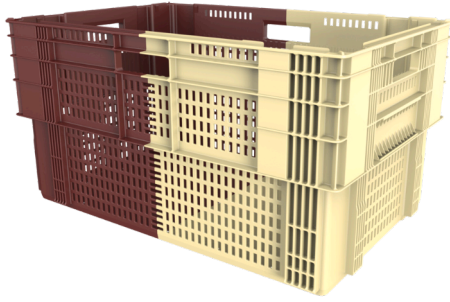




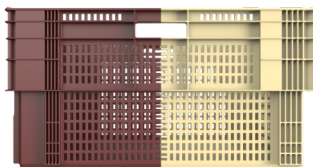
Schoeller Allibert

**POLYBEL**  
SOLUTIONS D'EMBALLAGE



## 13060 - 9707.000 - 60L - 600x400x316

This perforated 180° Stack Nest container is ideal for a variety of uses. Securely stacks when loaded and nests when empty to save valuable space on return transport. Maximized internal volume thanks to its straight wall design. Optimizing reverse logistics costs thanks to its high nesting ratio. The Bicolor enables easy visual identification of stack/nest position. Fully compatible with Europallets.



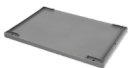
External (LxWxH):	604 mm x 404 mm x 317 mm
Internal (LxWxH):	552.5 mm x 361 mm x 298.5 mm
Weight:	2.62 kg
Volume:	59.5 L
Max. Individual Load capacity:	18 kg
Max. Static load on bottom container in a stack:	280 kg
Nesting ratio (%):	48.5 %
Incremental stack height:	306.5 mm
Base type:	solid base with drainage holes
Wall type:	Perforated , Perforated
Handles long side:	Open
Handles short side:	Open
Suitable for automatic handling:	Yes
RFIDoption:	Yes
Material:	HDPE
Temperature range:	-10 °C to 40 °C
Fire retardant:	No
Units/Pallet (pc):	25



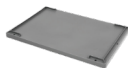
9853000 - Euro container lid  
600x400x29



9354000 - Clip-on lid for StackNest  
Straight crates 613x411x39



9354A00 - Clip-on lid for StackNest  
crates 613x411x39

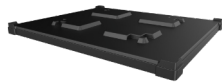


9354V00 - Clip-on lid for StackNest  
crates 613x411x39



**1200X1000 BAYOPAL**

1210 BaYoPal



6017830 - Pallet Cover 1229x1030x84-  
corners



## Feature and Benefits

---

- Bi-colour design - Enables both operators and automated equipment to detect stack or nest position, speed handling and avoid damage to content
- Reinforced base - Designed for automated food industry processes and logistics
- Ease of use - Deep comfortable handgrips
- Easy cleaning - Smooth internal and external surfaces suitable for hygienic food handling
- Food approved - Can be made out of 100% food safe material
- Maximized ventilation - Fast cooling for optimized food freshness and quality
- Reduce reverse logistics costs - Up to 50% nesting ratio