



Schoeller Allibert

Stack Nest 180 600x400x200 - Solid, OHH

Item: 9568001



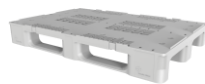
This stack/nest 180° container with open handles is ideal for multiple end-uses. Its high nesting ratio helps to optimize and reduce the cost of reverse logistics. The crate's bicolour design allows fast and easy stack/nest handling. A strong, smooth base and walls make the container easy to clean and perfect for use in automated food industry processes and logistics.

Specifications

External (LxWxH):	600 mm x 400 mm x 200 mm
Internal (LxWxH):	458.3 mm x 339.1 mm x 176.7 mm
Weight:	1.75 kg
Volume:	32 L
Max. Individual Load capacity:	20 kg
Max. Static load on bottom container in a stack:	150 kg
Wall type:	Solid , Solid
Handles long side:	No
Handles short side:	Open
Suitable for automatic handling:	Yes
RFID option:	Yes
Material:	HDPE
Temperature range:	-30 °C to 30 °C
Fire retardant:	No



9193000 - Dolly 604x402x162 - 4 swivel nylon wheels

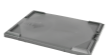


8380200 - Rackpal 1200x800x159 - 3R, R

Packaging

Units/Pallet (pc):	75
Pallet size:	1200 mm x 1000 mm
Pallet Height:	1190 mm

Feature and Benefits



9355000 Lid for Bicolour crates

- Strong smooth base and walls - Designed for automated food industry processes and logistics



Schoeller Allibert

- Bi-colour design - Enable both operators and automated equipment to detect stack or nest position, speed handling and avoid damage to content- Ease of use - Deep comfortable handgrips for safe and easy manual handling
- Easy cleaning - Smooth internal and external surfaces suitable for hygienic food handling

www.Schoellerallibert.com

The information on this datasheet has been compiled with the greatest possible care. Nevertheless, the information provided may contain inaccuracies. Before you rely on the information provided, it must be confirmed in another way. Schoeller Allibert is not liable for any damage that occurs directly or indirectly as a result of relying on incorrect information in this datasheet.

Datasheet Stack Nest | 12-10-2022

- Reduce reverse logistics costs - Up to 72% nesting ratio
- Traceability - Can be RFID enabled
- Food approved - Can be made out of 100% food safe material



www.Schoellerallibert.com

The information on this datasheet has been compiled with the greatest possible care. Nevertheless, the information provided may contain inaccuracies.

Before you rely on the information provided, it must be confirmed in another way. Schoeller Allibert is not liable for any damage that occurs directly or indirectly as a result of relying on incorrect information in this datasheet.

Datasheet Stack Nest | 12-10-2022