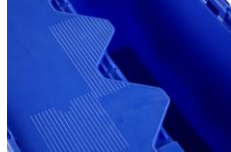




Schoeller Allibert



Kaiman 400x300x222

Item:

9937004

The Kaiman® is a rigid, nestable container with an integrated hinged lid that can be opened on two sides. Our Kaiman® series provides easy nesting when empty, saving valuable space required for storage or return transport. Label holders are located on one of the two short sides. A special ribbed texture holds self-adhesive labels securely whilst also allowing for easy removal. A special hinge design provides robust lid locking and evidence of tampering. Accessories such as security seals can help to secure goods against unauthorized removal. NB: not compatible with our Integra range and not suitable for mixed footprint stacking.

Accessories

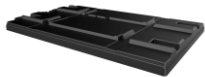


1325830 - Seal for Integra and Kaiman

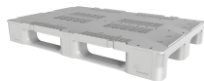


A199580008 - Security seal for Kaiman

Related Products



6018820 - Pallet Cover 1230x817x87 (1208+)



8380200 - Rackpal 1200x800x159 - 3R, R

Specifications

External (LxWxH):	400 mm x 300 mm x 222 mm
Internal (LxWxH):	338 mm x 254 mm x 197 mm
Weight:	1.59 kg
Volume:	18 L
Max. Individual Load capacity:	18 kg
Max. Static load on bottom container in a stack:	126 kg
Nesting ratio (%):	51 %
Incremental stack height:	210 mm
Base type:	Solid
Wall type:	Solid , Solid
Handles long side:	No
Handles short side:	Closed
Label holder long/short side:::	1
Lid available:	attached
Suitable for automatic handling:	Yes
RFID option:	Yes
Material:	PP
Temperature range:	-10 °C to 40 °C
Fire retardant:	No

Standard Colour:

646 Blue PMS
2728C



Packaging

Units/Pallet (pc):

135

Pallet size:

1200 mm x 1000
mm

Pallet Height:

Schoeller Allibert
1874 mm

The information on this datasheet has been compiled with the greatest possible care. Nevertheless, the information provided may contain inaccuracies.

Before you rely on the information provided, it must be confirmed in another way. Schoeller Allibert is not liable for any damage that occurs directly or indirectly as a result of relying on incorrect information in this datasheet.

Datasheet Stack Nest | 13-10-2022

Feature and Benefits

- Automation friendly - Lids allow automated opening, bevelled leading edge to base for smooth transition on conveyors
- Easy Customisation - Large print area for your logo on both long sides. Smaller print area inside lid provides visual identification when containers are in nested position- Identification of content - Ticket window and textured areas for easy removal of adhesive labels.
- Integrated interlocking lid - No lost lid, while lids hang vertically when open
- Protect your content - Tamper-evident security seals deter theft
- Stack- and nestable design - Saving valuable space up to 70% on empties return trips or when stored
- Ticket window - Retains and protect identity cards and labels

www.Schoellerallibert.com

The information on this datasheet has been compiled with the greatest possible care. Nevertheless, the information provided may contain inaccuracies.

Before you rely on the information provided, it must be confirmed in another way. Schoeller Allibert is not liable for any damage that occurs directly or indirectly as a result of relying on incorrect information in this datasheet.

Datasheet Stack Nest | 13-10-2022