

Schoeller Allibert



## Stack Nest Straight 600x400x147 - Perforated walls, OHH

Item:

9702002 

This fully perforated version is a part of the extensive 180° Stack Nest range. Versatile, compatible with Euro Pallets, and ideal for multiple-end uses. Optimizing reverse logistics costs with its high nesting ratio. Ergonomical thanks to the closed handles. High ventilation enables optimized airflow and fast cooling. Its bicolor design enables easy visual identification of stack/nest position.

### Accessories



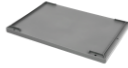
9853000 - Euro container lid  
600x400x29



9354000 - Clip-on lid for Stack Nest  
Straight crates 613x411x39



9354A00 - Clip-on lid for Stack Nest  
crates 613x411x39

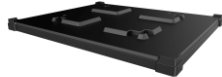


9354V00 - Clip-on lid for Stack Nest  
crates 613x411x39

### Related Products



1210 BaYoPal



6017830 - Pallet Cover 1229x1030x84 -  
corners

### Specifications

External (LxWxH):	604 mm x 404 mm x 150.5 mm
Internal (LxWxH):	554 mm x 360 mm x 127.9 mm
Weight:	1.53 kg
Volume:	26 L
Max. Individual Load capacity:	15 kg
Max.Static load on bottom container in a stack:	300 kg
Nesting ratio (%):	48 %
Incremental stack height:	140.5 mm
Base type:	perf
Wall type:	perf , perf
Handles long side:	Open
Handles short side:	Open
Suitable for automatic handling:	Yes
RFID option:	Yes
Material:	HDPE
Temperature range:	-10 °C to 40 °C
Fire retardant:	No
Is UN Certified:	No

### Packaging

Units/Pallet (pc):	60
Pallet size:	1200 mm x 1000 mm
Pallet Height:	1133 mm



Schoeller Allibert

The information on this datasheet has been compiled with the greatest possible care. Nevertheless, the information provided may contain inaccuracies.

Before you rely on the information provided, it must be confirmed in another way. Schoeller Allibert is not liable for any damage that occurs directly or indirectly as a result of relying on incorrect information in this datasheet.

Datasheet Stack Nest | 12-07-2022

## Feature and Benefits

---

- Bi-colour design - Enables both operators and automated equipment to detect stack or nest position, speed handling and avoid damage to content
- Reinforced base - Designed for automated food industry processes and logistics
- Ease of use - Deep comfortable handgrips
- Reduce reverse logistics costs - Up to 50% nesting ratio
- Maximized ventilation - Fast cooling for optimized food freshness and quality

[www.Schoellerallibert.com](http://www.Schoellerallibert.com)

The information on this datasheet has been compiled with the greatest possible care. Nevertheless, the information provided may contain inaccuracies.

Before you rely on the information provided, it must be confirmed in another way. Schoeller Allibert is not liable for any damage that occurs directly or indirectly as a result of relying on incorrect information in this datasheet.

Datasheet Stack Nest | 12-07-2022