




Schoeller Allibert



Stack Nest Straight 600x400x187

Item:

9699002 

This perforated stack/nest 180° container with open handles is ideal for multiple end uses. Securely stacks when loaded and nests when empty to save valuable space on return transport. Maximized internal volume thanks to its straight wall design. Optimizing reverse logistics costs thanks to its nesting ratio of 47.75%. The Bicolor enables easy visual identification of stack/nest position. Fully compatible with Euro pallets.

Accessories



9853000 - Lid Euro Stacking 600x400x29



9354000 - Clip-on lid for Stack Nest crates 613x411x39



9354A00 - Clip-on lid for Stack Nest Stack Nest crates 613x411x39

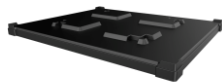


9354V00 - Clip-on lid for crates 613x411x39

Related Products



1210 BaYoPal



6017830 - Pallet Cover 1229x1030x84 - corners

Specifications

External (LxWxH):	604 mm x 404 mm x 190.5 mm
Internal (LxWxH):	554 mm x 361 mm x 166.9 mm
Weight:	1.75 kg
Volume:	35 L
Max. Individual Load capacity:	16 kg
Max.Static load on bottom container in a stack:	280 kg
Nesting ratio (%):	47.75 %
Incremental stack height:	177.5 mm
Base type:	Perforated
Wall type:	Perforated , Perforated
Handles long side:	Open
Handles short side:	Open
Suitable for automatic handling:	Yes
RFID option:	Yes
Material:	HDPE
Temperature range:	-10 °C to 40 °C
Fire retardant:	No
Is UN Certified:	No

Packaging



Schoeller Allibert

Units/Pallet (pc):	50
Pallet size:	1200 mm x 1000 mm
Pallet Height:	1232 mm

The information on this datasheet has been compiled with the greatest possible care. Nevertheless, the information provided may contain inaccuracies.

Before you rely on the information provided, it must be confirmed in another way. Schoeller Allibert is not liable for any damage that occurs directly or indirectly as a result of relying on incorrect information in this datasheet. Datasheet Stack Nest | 21-01-2022

Feature and Benefits

- Bi-colour design - Enables both operators and automated equipment to detect stack or nest position, speed handling and avoid damage to content
- Reinforced base - Designed for automated food industry processes and logistics
- Ease of use - Deep comfortable handgrips
- Reduce reverse logistics costs - Up to 50% nesting ratio
- Maximized ventilation - Fast cooling for optimized food freshness and quality

www.Schoellerallibert.com

The information on this datasheet has been compiled with the greatest possible care. Nevertheless, the information provided may contain inaccuracies.

Before you rely on the information provided, it must be confirmed in another way. Schoeller Allibert is not liable for any damage that occurs directly or indirectly as a result of relying on incorrect information in this datasheet.

Datasheet Stack Nest | 21-01-2022