



Schoeller Allibert



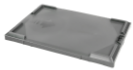
## Stack Nest 180 600x400x400 - Solid, OHH

Item: 9563000



This 180° stack/nest container is ideal for a variety of uses. Its high nesting ratio helps to optimize and reduce the cost of reverse logistics. The crate's bicolour design allows fast and easy stack/nest handling. A strong, smooth base and walls make the container easy to clean and perfect for use in automated food industry processes and logistics. Available in multiple heights, either in a solid or perforated version.

### Accessories

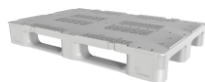


9355000 - Lid for Bicolour crates  
614x412x40

### Related Products



9193000 - Dolly 604x402x162 - 4 swivel  
3R, nylon wheels R



8380200 - Rackpal 1200x800x159 -

### Packaging

Units/Pallet (pc):	30
Pallet size:	1200 mm x 1000 mm

### Specifications

External (LxWxH):	600 mm x 400 mm x 400 mm
Internal (LxWxH):	463 mm x 338 mm x 370 mm
Weight:	3.2 kg
Volume:	70 L
Max. Individual Load capacity:	24 kg
Max.Static load on bottom container in a stack:	280 kg
Nesting ratio (%):	71 %
Incremental stack height:	375 mm
Base type:	Solid
Wall type:	Solid , Solid
Handles long side:	Closed
Handles short side:	Open

### Feature and Benefits

Suitable for automatic handling:	Yes
RFID option:	Yes
Material:	HDPE
Temperature range:	-30 °C to 30 °C
Fire retardant:	No



Schoeller Allibert

Pallet Height: 1135 mm

---

- Strong smooth base and walls - Designed for automated food industry processes and logistics
- Bi-colour design - Enable both operators and automated equipment to detect stack or nest position, speed handling and avoid damage to content
- Ease of use - Deep comfortable handgrips for safe and easy manual handling

[www.Schoellerallibert.com](http://www.Schoellerallibert.com)

The information on this datasheet has been compiled with the greatest possible care. Nevertheless, the information provided may contain inaccuracies.

Before you rely on the information provided, it must be confirmed in another way. Schoeller Allibert is not liable for any damage that occurs directly or indirectly as a result of relying on incorrect information in this datasheet. Datasheet Stack Nest | 10-10-2022

- Easy cleaning - Smooth internal and external surfaces suitable for hygienic food handling
- Reduce reverse logistics costs - Up to 72% nesting ratio
- Food approved - Can be made out of 100% food safe material

[www.Schoellerallibert.com](http://www.Schoellerallibert.com)

The information on this datasheet has been compiled with the greatest possible care. Nevertheless, the information provided may contain inaccuracies.

Before you rely on the information provided, it must be confirmed in another way. Schoeller Allibert is not liable for any damage that occurs directly or indirectly as a result of relying on incorrect information in this datasheet.

Datasheet Stack Nest | 10-10-2022