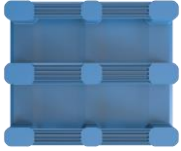





Schoeller Allibert



See www.schoellerallibert.com for additional material like
[Handling Instructions](#)
[View Video](#)

Maestro 1200x1000x165 - 3R, R

: 9377000 

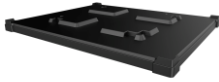
Strong, hygienic and safe, the heavy-duty Maestro® pallet with 3 runners and solid top deck is ideal for cleanroom applications. Maximum safety at handling and hygienically safe and easy to clean thanks to its smooth design. Ideal for secure stretch wrapping thanks to its design with rounded corners. The safety rim ensures that the goods remain securely on the pallet and provides stability when stacked.

Specifications

External (LxWxH):	1200 mm x 1000 mm x 165 mm
Weight:	23.5 kg
Max. Individual Load capacity:	1500 kg
Max. Static load (*):	5000 kg
Max. Dynamic load (*):	1500 kg
Max Racking load (*):	1200 kg
Pallet Deck:	Solid
Number of Skids:	3
Antislip option:	no
RFID option:	No

Feature and Benefits

Related Products



6017830 - Pallet Cover 1229x1030x84 - corners

Material:



6017833 - Pallet Cover 1229x1030x84 - corner & straps

HDPE

Temperature range:

-20 °C to 40 °C

Fire retardant:

No

Packaging



Schoeller Allibert

Pallet size:

1200 mm x 1000 mm

Units/Pallet (pc):

10

Pallet Height:

1600 mm

- sustainable - made from 100% sustainable materials
- 4 way for entry - Pallet jack accessible from 4 directions
- versatile - available in multiple top deck and runner configurations
- 100% plastics - no metal parts involved, easy to recycle
- Heavy duty - capable of taking heavy loads in rack
- rackable - asset can be racked and is tested according to ISO8611.
- washing - units can be washed
- Reinforced - reinforced version available, steel tubes

(*) All available technical data are the result of tests under specific conditions like temperature, type of load and testing time, based on testing procedures according to ISO8611-1:2012. In circumstances outside the ISO8611 standard our service team is available to test products according to your specific requirements and applications. Description of the specified loads are as follows:

STATIC LOAD: resistance to a pressure on a product standing on a flat ground surface under a static load according to ISO8611-1:2012, test 4

DYNAMIC LOAD: load capability under forklift handling conditions according to ISO8611-1:2012, test 2.

RACKING LOAD: load capacity under rack conditions according to ISO8611-1:2012, test 1. When the pallet has only 3 runners, the racking is only allowed over the longside.

www.Schoellerallibert.com

The information on this datasheet has been compiled with the greatest possible care. Nevertheless, the information provided may contain inaccuracies.

Before you rely on the information provided, it must be confirmed in another way. Schoeller Allibert is not liable for any damage that occurs directly or indirectly as a result of relying on incorrect information in this datasheet.

Datasheet Pallets | 14-11-2022

- Alligrip? - antislip deck version available upon demand
- SmartLink ready - Features locations for RFID and IoT beacons to ensure efficient track & tracing.
- Fully recyclable at the end of its long service life - Recyclable
- We grant a 2 year warranty on all purchased products - 2 years warranty

www.Schoellerallibert.com

The information on this datasheet has been compiled with the greatest possible care. Nevertheless, the information provided may contain inaccuracies. Before you rely on the information provided, it must be confirmed in another way. Schoeller Allibert is not liable for any damage that occurs directly or indirectly as a result of relying on incorrect information in this datasheet.