



Schoeller Allibert



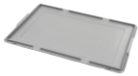
## Euro Container 600x400x318 - Solid, CH

Item:

9250V00 

This stackable euro container is suitable for a variety of industries and offers efficient handling, storage and transport. Thanks to many different footprints, heights and variants, they meet all kind of industry needs. Versatile, easy to handle and the perfect solution for automated handling systems.

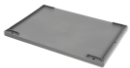
## Accessories



8714820 - Euro container lid 600x400



9353000 - Euro container lid 600x400x30



9354000 - Euro container lid 600x400x39

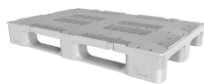


9902000 - Divider Euro Container 1100x45

## Related Products



9193000 - Dolly 604x402x162 - 4 swivel 3R, nylon wheels R



8380200 - Rackpal 1200x800x159 -

## Specifications

External (LxWxH):	600 mm x 400 mm x 318 mm
Internal (LxWxH):	555 mm x 355 mm x 302 mm
Weight:	2.88 kg
Volume:	60 L
Max. Individual Load capacity:	20 kg
Max. Static load on bottom container in a stack:	600 kg
Max. Dynamic load on bottom container in a stack:	200 kg
Incremental stack height:	306 mm
Base type:	Solid
Wall type:	Solid , Solid
Handles long side:	No
Handles short side:	Closed
Suitable for automatic handling:	Yes
RFID option:	Yes
Material:	HDPE
Temperature range:	-10 °C to 50 °C
Fire retardant:	No

Standard Colour:

522 Grey RAL 7012



## Packaging

---

Units/Pallet (pc):	15	
Pallet size:	1200 mm x 1000 mm	Pallet Height:

Schoeller Allibert  
1087 mm

The information on this datasheet has been compiled with the greatest possible care. Nevertheless, the information provided may contain inaccuracies.

Before you rely on the information provided, it must be confirmed in another way. Schoeller Allibert is not liable for any damage that occurs directly or indirectly as a result of relying on incorrect information in this datasheet.

Datasheet Stackable | 26-10-2022

## Feature and Benefits

---

- Maximized internal volume - Straight walls and base to maximize internal volume
- Automation friendly - Designed to be compatible with most automated handling systems and conveyor systems
- Ease of use - Ergonomic handles allow easy and safe manual handling
- Easy identification - Different label areas available
- Euronorm size - European standard in sizing of crates, called Euro-norm enables them to stack easily within the several standard sizes and offers compatibility with Euro Pallets
- Recyclable - Fully recyclable at the end of its long service life
- Available in different versions - Solid and perforated versions with open or closed handles

[www.Schoellerallibert.com](http://www.Schoellerallibert.com)

The information on this datasheet has been compiled with the greatest possible care. Nevertheless, the information provided may contain inaccuracies.

Before you rely on the information provided, it must be confirmed in another way. Schoeller Allibert is not liable for any damage that occurs directly or indirectly as a result of relying on incorrect information in this datasheet.

Datasheet Stackable | 26-10-2022