



Schoeller Allibert



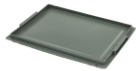
Euro Container 400x300x235 - Solid, CH

Item:

9240V01

This stackable euro container is suitable for a variety of industries and offers efficient handling, storage and transport. Thanks to many different footprints, heights and variants, they meet all kind of industry needs. Versatile, easy to handle and the perfect solution for automated handling systems.

Accessories



9352000 - Lid Euro Container 400x300x30



8705820 - Lid Euro Container 400x300



8705821 - Lid Euro Container Hinged 400x300x26

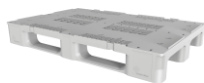


9902000 - Divider Euro Container 1100x45

Related Products



9193000 - Dolly 604x402x162 - 4 swivel 3R, nylon wheels R



8380200 - Rackpal 1200x800x159 -

Specifications

External (LxWxH):	400 mm x 300 mm x 235 mm
Internal (LxWxH):	355 mm x 255 mm x 222 mm
Weight:	1.27 kg
Volume:	20 L
Max. Individual Load capacity:	20 kg
Max.Static load on bottom container in a stack:	450 kg
Base type:	Solid
Wall type:	Solid , Solid
Handles long side:	Closed
Handles short side:	Closed
Suitable for automatic handling:	Yes
RFID option:	Yes
Material:	PP
Temperature range:	-10 °C to 50 °C
Fire retardant:	No
Standard Colour:	522 Grey RAL 7012

Packaging

Units/Pallet (pc):	40
Pallet size:	1200 mm x 1000 mm
Pallet Height:	1060 mm



Schoeller Allibert

The information on this datasheet has been compiled with the greatest possible care. Nevertheless, the information provided may contain inaccuracies.

Before you rely on the information provided, it must be confirmed in another way. Schoeller Allibert is not liable for any damage that occurs directly or indirectly as a result of relying on incorrect information in this datasheet.

Datasheet Stackable | 03-06-2022

Feature and Benefits

- Maximized internal volume - Straight walls and base to maximize internal volume
- Automation friendly - Designed to be compatible with most automated handling systems and conveyor systems
- Ease of use - Ergonomic handles allow easy and safe manual handling
- Easy identification - Different label areas available
- Euronorm size - European standard in sizing of crates, called Euro-norm enables them to stack easily within the several standard sizes and offers compatibility with Euro Pallets
- Recyclable - Fully recyclable at the end of its long service life
- Available in different versions - Solid and perforated versions with open or closed handles

www.Schoellerallibert.com

The information on this datasheet has been compiled with the greatest possible care. Nevertheless, the information provided may contain inaccuracies.

Before you rely on the information provided, it must be confirmed in another way. Schoeller Allibert is not liable for any damage that occurs directly or indirectly as a result of relying on incorrect information in this datasheet.

Datasheet Stackable | 03-06-2022