



Schoeller Allibert



Euro Container 600x400x280 Solid CHH

Item:

8679V04 

This solid stackable euro container with a 600x400 footprint is suitable for a variety of industries and offer efficient handling, storage and transport. Thanks to many different footprints, heights and variants, they meet all kind of industry needs. Versatile and easy to handle, they are the perfect solution for automated handling systems. Ergonomical thanks to the closed hangrips on all four sides.



Accessories



A199580022 - Label Clip Stainl. Steel
13x76x19



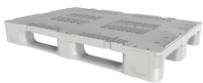
9901000 - Divider Euro Container
1100x150



8670000 - Divider Euro Container
1100x190

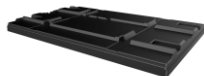
A199580113 - Ticketholder
Euro Container 270x104x8

Related Products



8380200 - Rackpal 1200x800x159 - 3R

www.Schoellerallibert.com



6018820 - Pallet Cover 1230x817x87
(1208+)

Specifications

External (LxWxH):	599 mm x 399 mm x 280 mm
Internal (LxWxH):	555 mm x 355 mm x 265 mm
Weight:	2.51 kg
Volume:	52 L
Max. Individual Load capacity:	20 kg
Max.Static load on bottom container in a stack:	500 kg
Incremental stack height:	268 mm
Base type:	Solid
Wall type:	Solid , Solid
Handles long side:	Closed
Handles short side:	Closed
Suitable for automatic handling:	Yes
RFID option:	Yes
Material:	HDPE
Temperature range:	-10 °C to 50 °C
Fire retardant:	No
Standard Colour:	522 Grey RAL 7012

Packaging

Units/Pallet (pc):	20
Pallet size:	1200 mm x 1000 mm
Pallet Height:	1240 mm

The information on this datasheet has been compiled with the greatest possible care. Nevertheless, the information provided may contain inaccuracies.

Before you rely on the information provided, it must be confirmed in another way. Schoeller Allibert is not liable for any damage that occurs directly or indirectly as a result of relying on incorrect information in this datasheet.

Datasheet Stackable | 16-02-2022



Schoeller Allibert

Feature and Benefits

- Automation friendly - Designed to be compatible with most automated handling systems and conveyor systems- Easy Customisation - Different label areas available
- Maximized internal volume - Straight walls and base to maximize internal volume
- Easy cleaning - Smooth walls and base for easy and fast cleaning
- Euronorm size - European standard in sizing of crates, called "Euro-norm" enables them to stack easily within the several standard sizes and offers compatibility with Euro Pallets
- Available in different versions - Solid and perforated versions with open or closed handles
- Recyclable - Fully recyclable at the end of its long service life

www.Schoellerallibert.com

The information on this datasheet has been compiled with the greatest possible care. Nevertheless, the information provided may contain inaccuracies.

Before you rely on the information provided, it must be confirmed in another way. Schoeller Allibert is not liable for any damage that occurs directly or indirectly as a result of relying on incorrect information in this datasheet.

Datasheet Stackable | 16-02-2022