



Schoeller Allibert



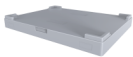
## Magnum Smooth Wall HD 800x600x835 - 2R 2DD

Item: 2630610

See [www.schoellerallibert.com](http://www.schoellerallibert.com) for additional material like View Video

Magnum Smooth Wall HD® is suitable for heavy-duty applications. With a unit load of 700kg and a stack load of 2100kg, the Magnum Smooth Wall HD® is thus designed to handle extra-heavy loads. Label holders are available in several positions and RFID antennas can be integrated into well-protected positions. The drop doors enable operators to easily load and unload the container. Easy access to the load thanks to the drop-doors. Its non-sequential folding enables easy handling by operators. Ecological, all container components are easily replaceable and after its long working life, the Magnum Smooth Wall HD® is fully recyclable.

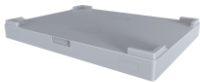
### Accessories



2636820 - FLC Lid 809x609x91 (HD range)

### Specifications

### Related Products



2636820 - FLC Lid 809x609x91 (HD range)



9142092 - MaxiPac 800x600x1080 - 4C, 4DD

External (LxWxH):	800 mm x 600 mm x 835 mm
Internal (LxWxH):	740 mm x 540 mm x 685 mm
Weight:	22.1 kg
Volume:	274 L
Max. Individual Load capacity:	700 kg
Max. Static load on bottom container in a stack:	2100 kg
Max. Dynamic load on bottom container in a stack:	700 kg
Folding Ratio (%):	52.9 %
Folding Height:	373 mm
Base type:	solid base with drainage holes
Wall type:	solid , Solid
Number of Skids:	2
Number of Feet:	0
Long Side Door, Short Side Door:	Yes , 0 No
Handles long side:	No

Handles short side:	No
Label holder long/short side::	1
Drainage holes:	8
Lid available:	Drop on 2636820
RFID option:	Yes
Material:	PP PE (Label Holder) PE (hinge) POM
Temperature range:	-10 °C to 50 °C
Standard Colour:	522 Grey RAL 7012
Is UN Certified:	No



Schoeller Allibert

## Packaging

Units/Pallet (pc):	12
Pallet size:	1200 mm x 800 mm

Pallet Height:	2408 mm
----------------	---------

The information on this datasheet has been compiled with the greatest possible care. Nevertheless, the information provided may contain inaccuracies. Before you rely on the information provided, it must be confirmed in another way. Schoeller Allibert is not liable for any damage that occurs directly or indirectly as a result of relying on incorrect information in this datasheet. Datasheet Foldable Large Containers | 27-10-2022

## Feature and Benefits

- bayonet technology - easy repair runners
- smooth design - easy to clean, less dirt traps
- interstackability - can be stacked with and without lid
- Heavy duty - allow high payload per box
- Foldable design - Cost saving when empty. Optimizing vehicle fill return transports.
- drop doors HD - 2 long side drop doors ensuring an ergonomical emptying of the box.
- 100% plastic - No metal parts making unit resistant to corrosion.
- SmartLink ready - Features locations for RFID and IoT beacons to ensure efficient track & tracing.
- Fully recyclable at the end of its long service life - Recyclable
- We grant a 2 year warranty on all purchased products - 2 years warranty

test

[www.Schoellerallibert.com](http://www.Schoellerallibert.com)

The information on this datasheet has been compiled with the greatest possible care. Nevertheless, the information provided may contain inaccuracies.

Before you rely on the information provided, it must be confirmed in another way. Schoeller Allibert is not liable for any damage that occurs directly or indirectly as a result of relying on incorrect information in this datasheet. Datasheet Foldable Large Containers | 27-10-2022