
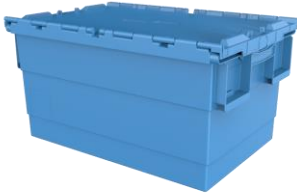




Schoeller Allibert

Integra 600x400x300

Item: 1311851 



Providing security for non-food industry, e-commerce and retail applications, the Integra® range of attached lid containers protect products from pollution and contamination. Security seals and lids that support strapping contribute to safe and secure transportation. The design features bumpers on the ends which helps prevent containers from piling up on conveyors. When empty, the Integra® saves you space due to its high nesting ratio. Integrated label holders and striped zones for self-adhesive labels allow the Integra® to be customized. NB: not compatible with the Kaiman range.



Specifications



9193000 - Dolly 604x402x162 - 4 swivel nylon wheels



9192004 - Universal dolly 798x598x171 - 1 swivel, 1 swivel with brake and 2 fixed

Related Products

Volume: Max. Individual	55 L
Load capacity:	53 kg
Max.Static load on bottom container in a stack:	400 kg
Max. Dynamic load on bottom container in a stack:	200 kg

Label holder long/short side::	1
Lid available:	attached
Suitable for automatic handling:	Yes
RFID option:	Yes
Material:	PP-05
Temperature range:	-20 °C to 40 °C
Fire retardant:	No
Standard Colour:	626 Blue RAL 5012



Schoeller Allibert

(LxWxH): 600 mm x 400 mm x 315 mm

(LxWxH): 528 mm x 343 mm x 285 mm

Packaging

External

Internal

Weight:	3.4 kg
Nesting ratio (%):	59 %
Incremental stack height:	303 mm
Base type:	Solid
Wall type:	Solid , Solid
Handles long side:	No
Handles short side:	Yes

Units/Pallet (pc): 64

Pallet size: 1200 mm x 1000 mm Pallet Height: 2300 mm

www.Schoellerallibert.com

The information on this datasheet has been compiled with the greatest possible care. Nevertheless, the information provided may contain inaccuracies.

Before you rely on the information provided, it must be confirmed in another way. Schoeller Allibert is not liable for any damage that occurs directly or indirectly as a result of relying on incorrect information in this datasheet.

Datasheet Stack Nest | 12-10-2022

Feature and Benefits

-
- Integrated interlocking lid - No lost lid, while lids hang vertically when open
 - Identification of content - Ticket window and textured areas for easy removal of adhesive labels.
 - Stack- and nestable design - Saving valuable space on return transport, nests by up to 70% when empty
 - Designed for automated handling - Lids allow automatic opening, smooth flat base to run on conveyor belts- Traceability - Optional RFID enabling
 - Protect your content - Tamper-evident security seals deter theft



www.Schoellerallibert.com

The information on this datasheet has been compiled with the greatest possible care. Nevertheless, the information provided may contain inaccuracies.

Before you rely on the information provided, it must be confirmed in another way. Schoeller Allibert is not liable for any damage that occurs directly or indirectly as a result of relying on incorrect information in this datasheet.

Datasheet Stack Nest | 12-10-2022